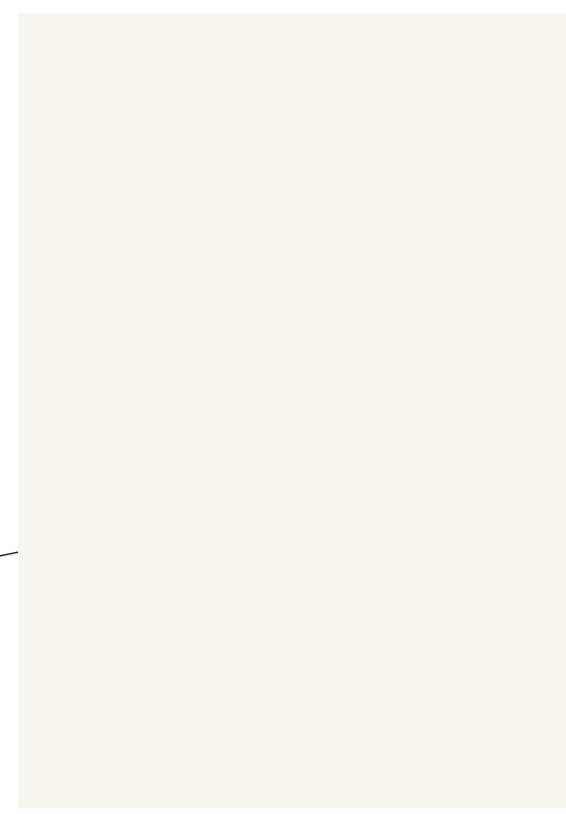
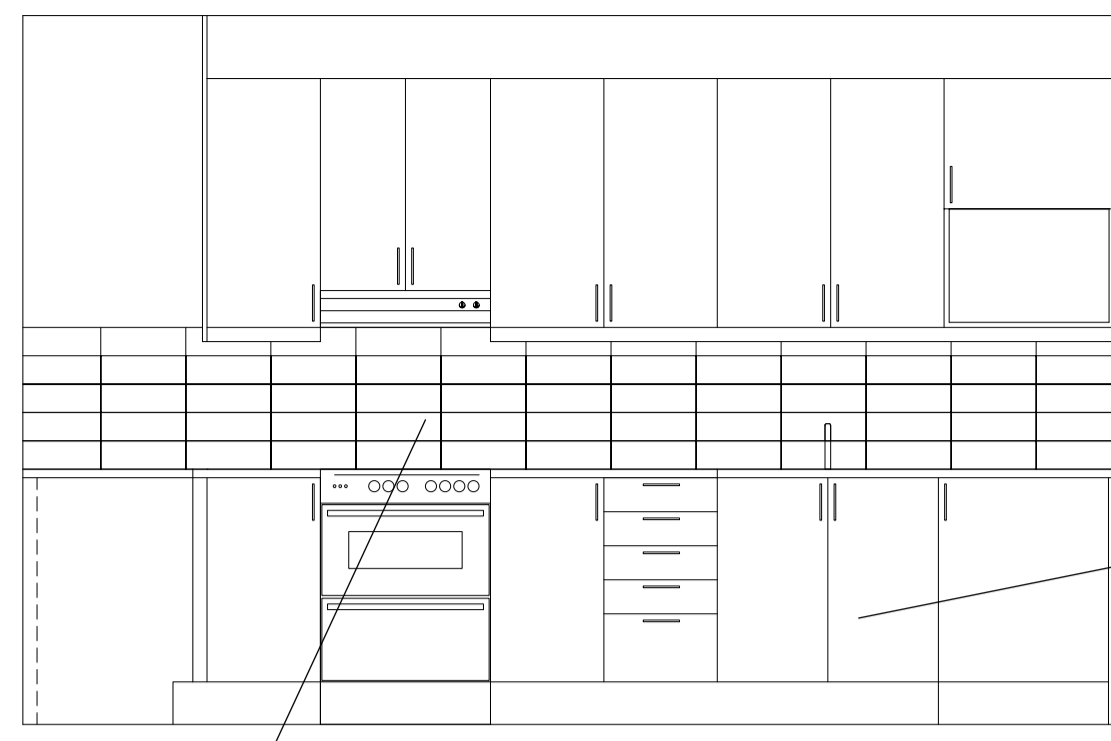


# MATERIAL OCH KULÖRER

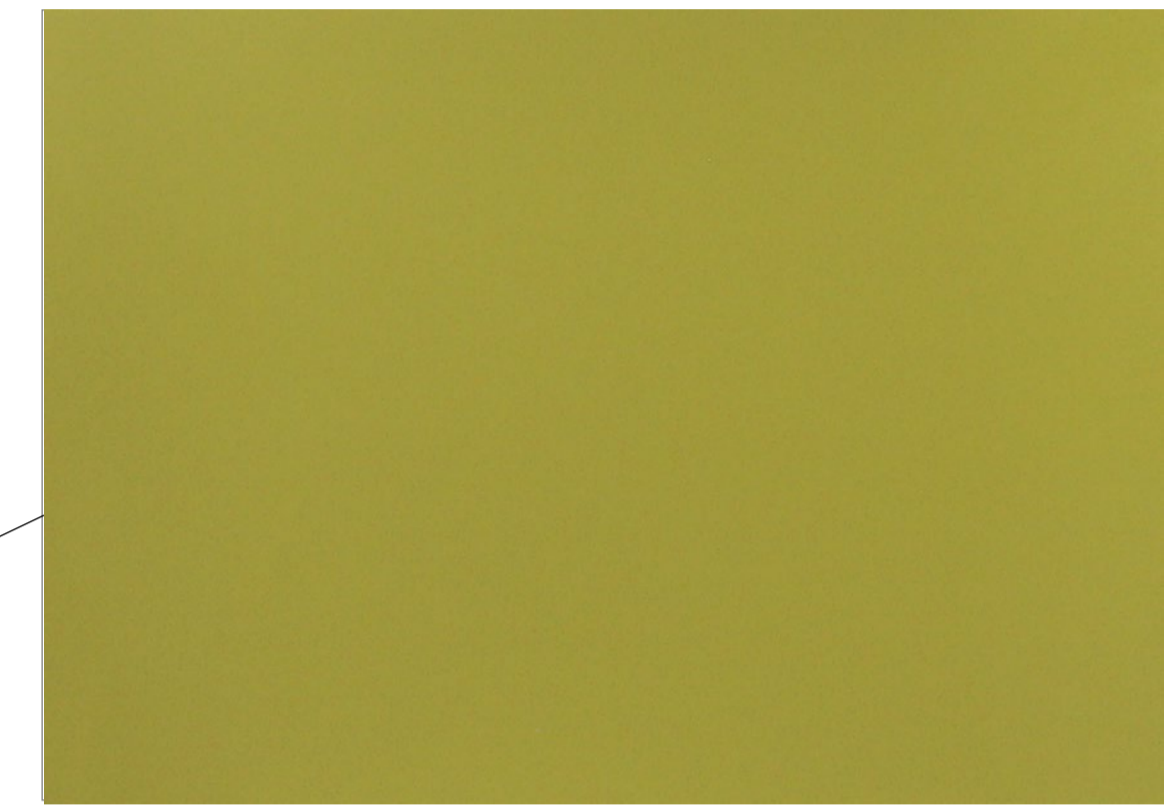
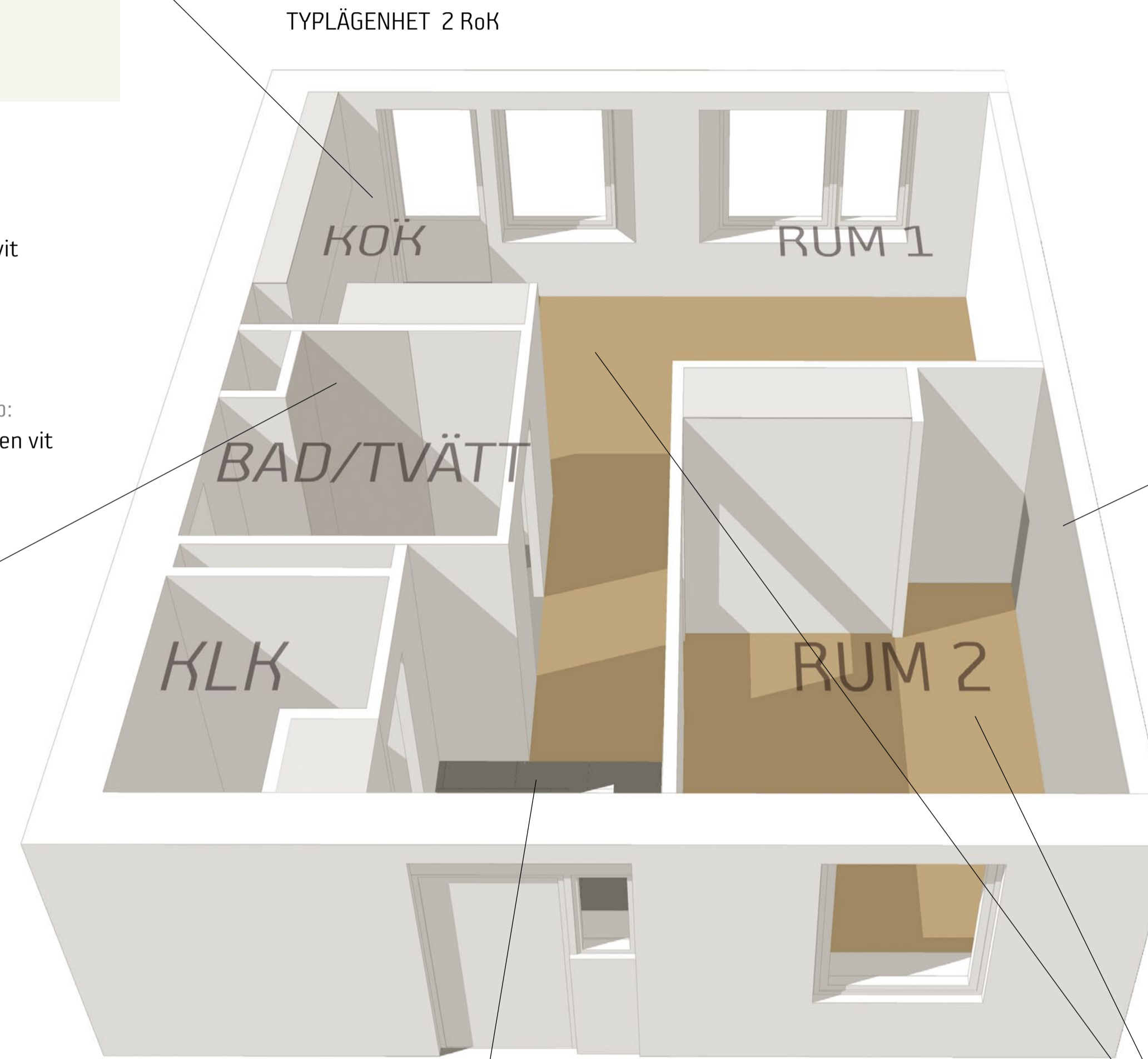
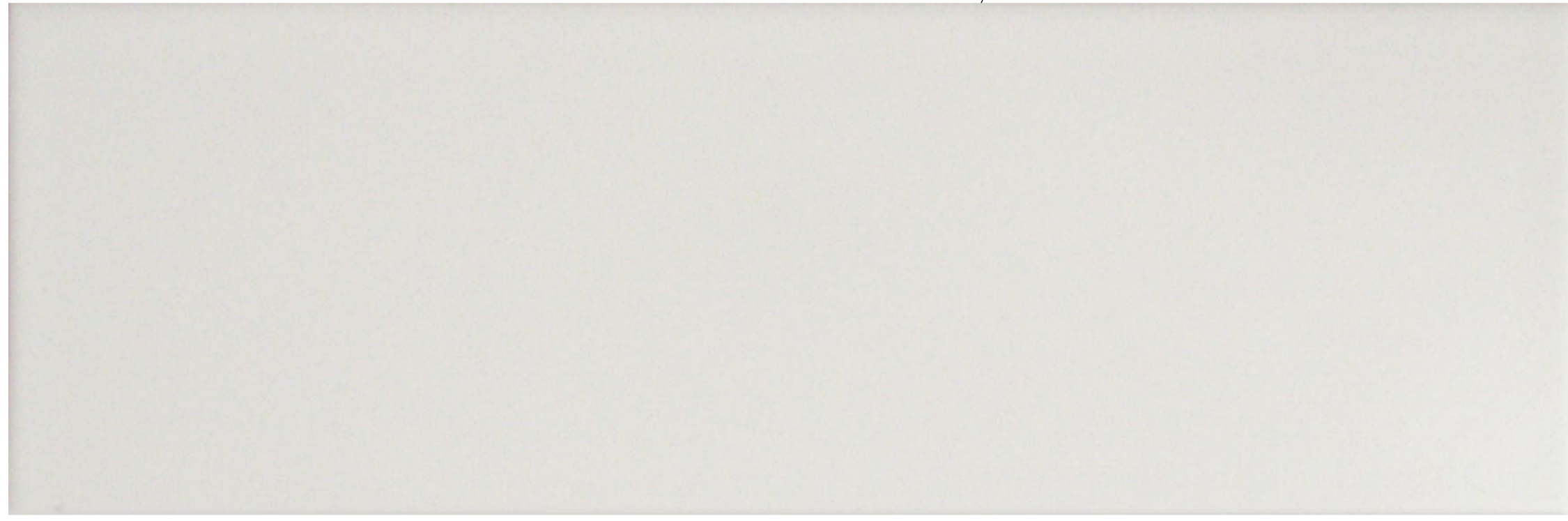
Höjdenvändan - LERUM

# DAGGKÅPA



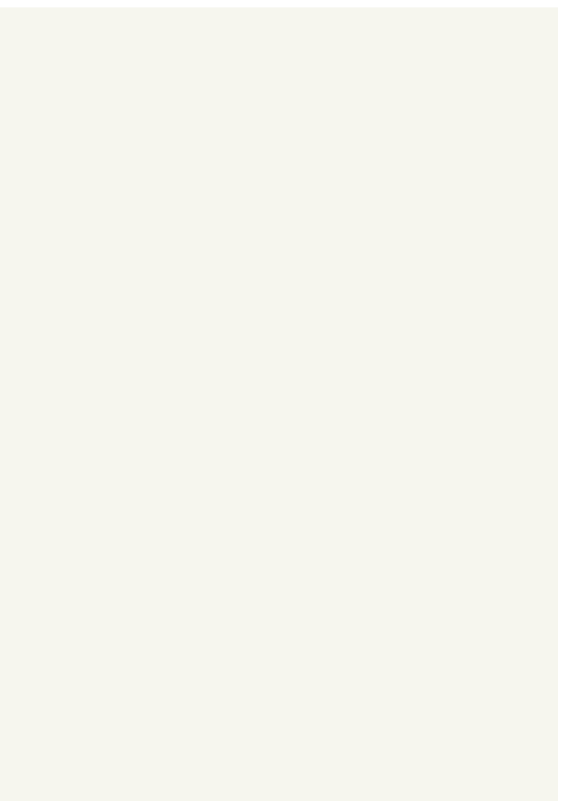
## KÖK

Köksbänk:  
Laminat, VirrVarr, vit  
Kakel över bänk:  
Höganäs Arkitekt  
100x300, ljusgrå  
794223  
Kulör vägg och skåp:  
NCS S 1002-Y, bruten vit

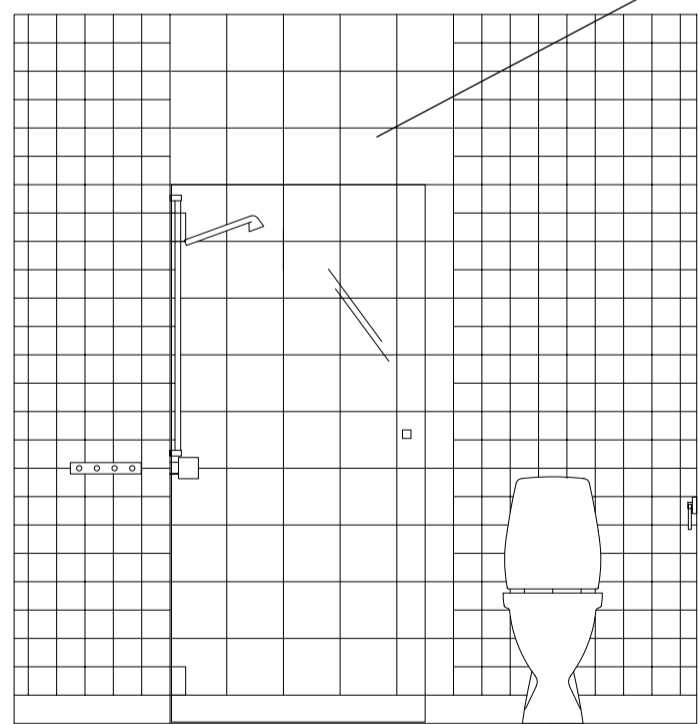
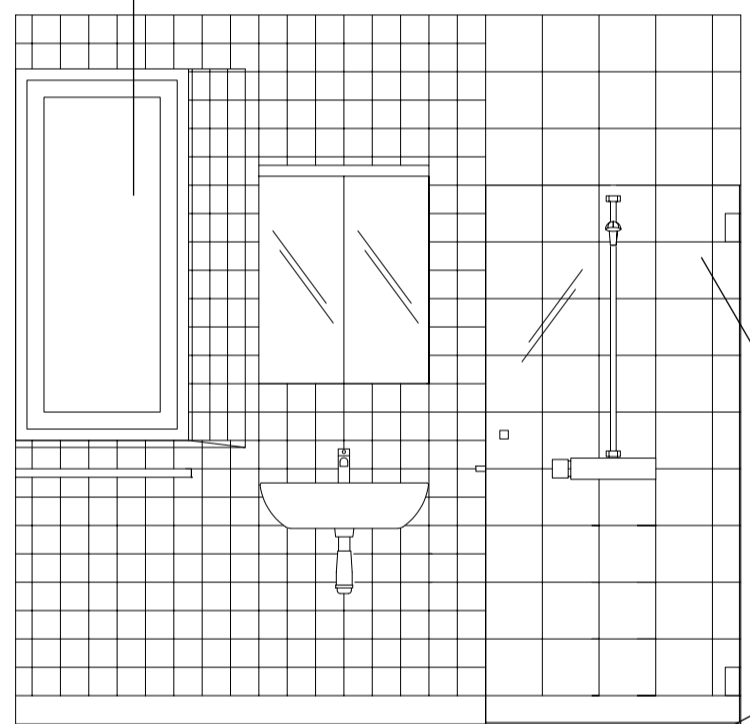


## SOVRUM (RUM i 1RoK)

Fondvägg:  
NCS S 3050-G80Y, olivgrön  
Övriga väggar:  
NCS S 1002-Y, bruten vit

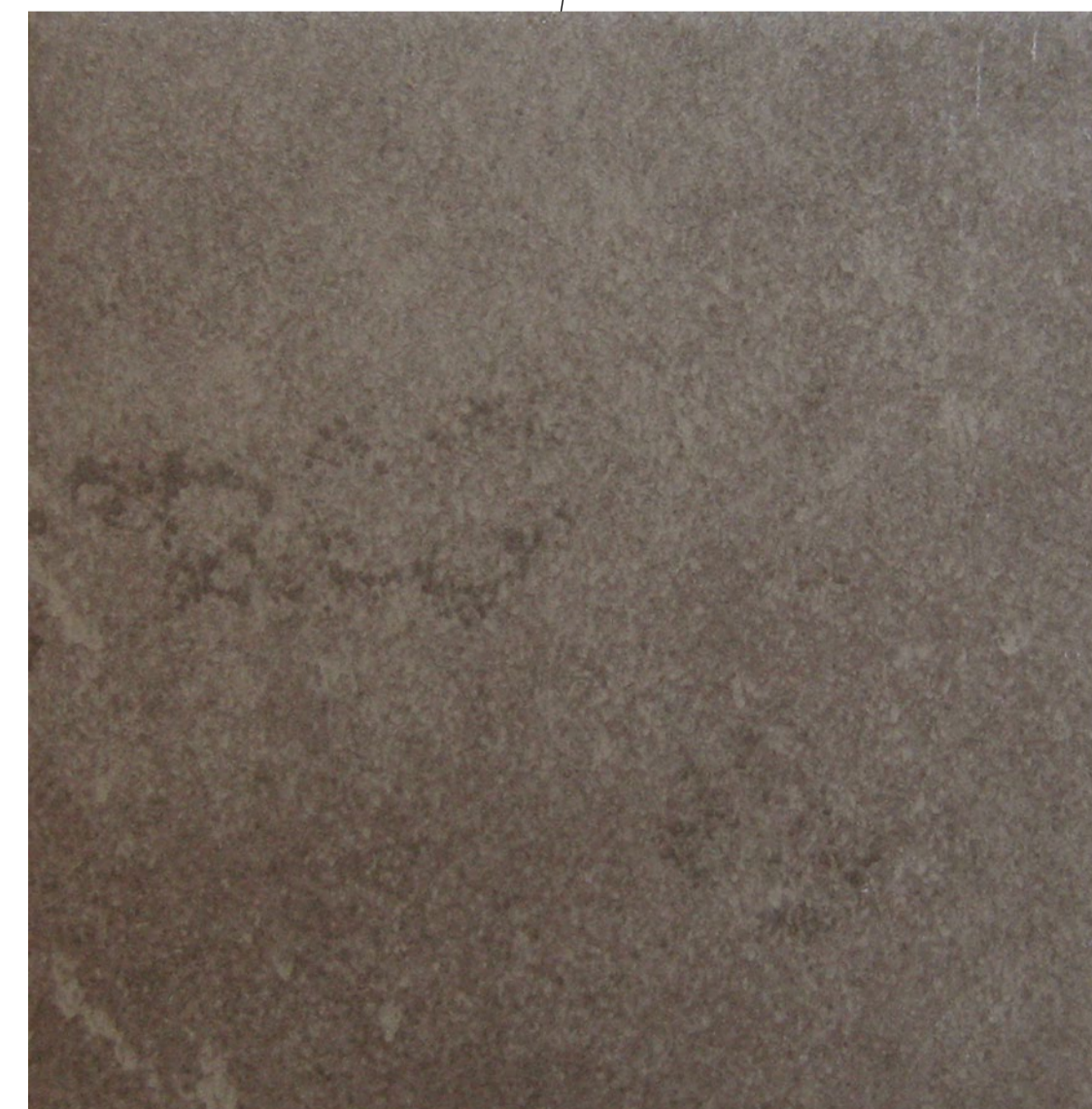
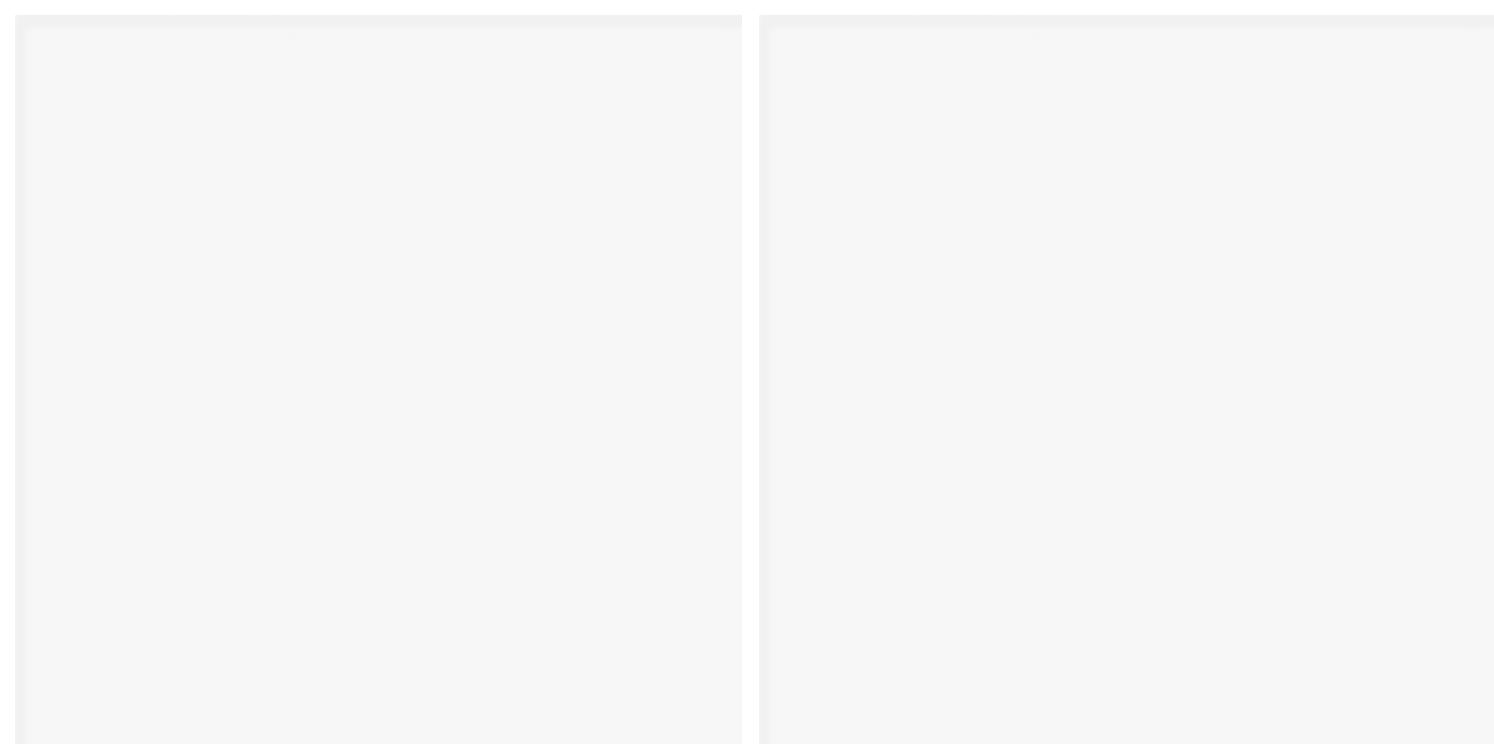


Badrumsexempel med fönster



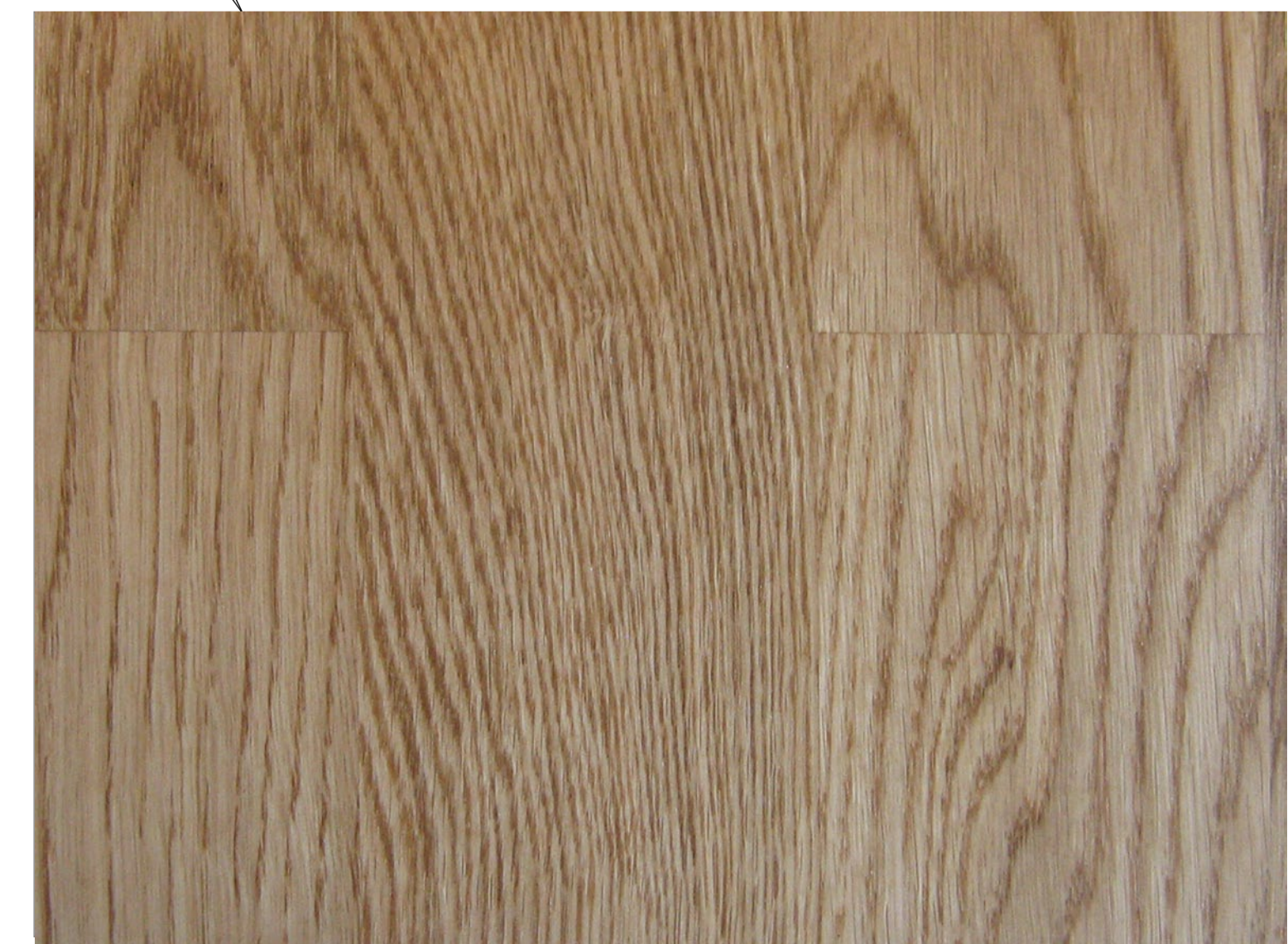
## BADRUM

Golv:  
Tarkett Optima, ljusgrå  
3242864  
Kakel fondvägg:  
Höganäs Harmony  
200x200, grå blank  
H30905K  
Kulör övriga väggar:  
Höganäs Harmony  
100x100, vit matt  
H1040100M



## KÖK, VARDAGSRUM OCH SOVRUM

Golv:  
Ekparkett  
Golvsockel:  
Ek



## HALL

Golvklinker:  
Höganäs Altaj  
300x600, Bronzo  
0077508

